



Basic Requirements for Creating a Penetration

Determine the required period of fire resistance of the element, and for loadbearing structures, ascertain the required load. The area to be sealed requires the same fire resistance as the complete floor or wall construction. In order to ensure the stability of the services is maintained under fire conditions, we recommend that all services must be adequately supported at maximum 250mm away from the wall or floor on both sides of the penetration. System fixings, impact protection and suspension elements must be steel. Monal alloys, aluminium etc are not permitted. Accessories such as guard-rails, steel angles, threaded rods. Suspension elements etc. must only be fixed to adjacent solid substrates such as concrete or masonry.

Intumex® products must be applied in accordance with EU directives and national regulations for construction material in general, and fire stopping in particular, with the applicable national test certificates and approvals, and in accordance with applicable national building regulations. Products may only be applied by trained professionals with adequate knowledge of and experience in the use of fire stopping products, and only after a thorough review of the installation guidelines, the safety data sheets, and the national test certificates and approvals. All the relevant documents can be obtained free-of-charge by contacting Intumex® or from your local dealer via telephone or in writing; in addition all installation guidelines and the safety data sheets can be downloaded free-of-charge from the Intumex® website (see www.intumex.at).

General Information

- ⇒ For interior use only
- ⇒ Under wet areas or humid conditions the surface of the seal must be painted.
- ⇒ For applications in floor no supporting structure is required.
- ⇒ Suitable for single or bundles of cables, for measurement and control lines, combustible and non-combustible pipes with or without insulation.
- ⇒ Maximum opening size in wall or floor is in accordance with the maximum cored hole diameter
- ⇒ Simple and exact fit, easily cut using standard tools.
- ⇒ Painting is possible; adhesion and compatibility must be checked.

Intumex® products must be applied in accordance with EU directives and national regulations for construction material in general, and fire stopping in particular, with the applicable national test certificates and approvals, and in accordance with applicable national building regulations. Products may only be applied by trained professionals with adequate knowledge of and experience in the use of fire stopping products, and only after a thorough review of the installation guidelines, the safety data sheets, and the national test certificates and approvals. All the relevant documents can be obtained free-of-charge by contacting Intumex® or from your local dealer via telephone or in writing; in addition all installation guidelines and the safety data sheets can be downloaded free-of-charge from the Intumex® website (see www.intumex.at).

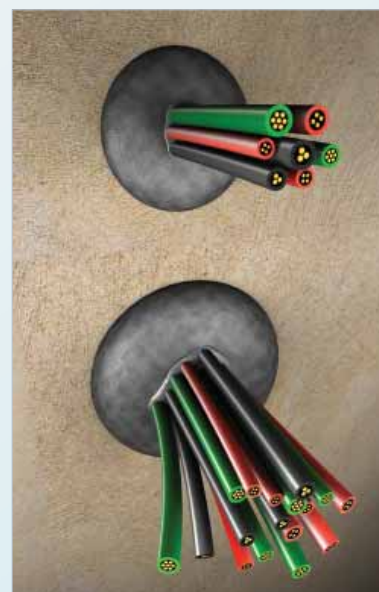


Application conditions

⇒ No known limits in respect to ambient conditions in the building during installation.

Application

Consumption Data	Maximum capacity of services is 60% of the aperture area (in consideration of currently valid electrical standards)		
Installation	Openings in walls and floors have to be closed on both sides; off centre annular gaps are permissible; A minimum spacing between cored holes/plugs is not required;		
Wall/Floor	For use in all solid wall and floor constructions with a minimum thickness of 150mm and a minimum density of 650kg/m ³		
Type	Minimum cored hole diameter (mm)	Maximum cored hole diameter (mm)	Installation depth (mm)
Intumex® FP 65	40 mm	65 mm	60 mm
Intumex® FP 80	50 mm	80 mm	60 mm
Intumex® FP 110	80 mm	110 mm	60 mm
Intumex® FP 125	100 mm	125 mm	60 mm
Intumex® FP 140	110 mm	140 mm	60 mm
Intumex® FP 170	140 mm	170 mm	60 mm
Intumex® FP 210	180 mm	210 mm	60 mm
Intumex® FP 260	220 mm	260 mm	60 mm





Maximum capacity of services is 60% of the aperture area; also with off centre annular gaps; a minimum spacing between cored holes/plugs is not required

Drill hole size	Application examples
Drill hole Ø 60 up to 250mm	Blank penetration
Drill hole Ø 60mm	PVC pipe up to 20mm diameter, 0,5mm thickness 2 cables in PVC pipe 5x1,5mm ²
	One cable up to diameter = 22mm (H07V-K 4x10 mm ²)
	Metal pipe up to 19mm diameter, 2mm thickness with ≥10mm combustible or non-combustible insulation
	Cable bundle up to 48mm diameter (NYM, H07V-K4)
Drill hole Ø 120 mm	PVC pipe up to 50mm diameter, 1,2mm thickness 5 cables in PVC pipe (H07V-K) 5 x 2,5mm ²
	Cable up to 75mm (N2XSEY 3 x 150mm ²)
	Cable bundle up to 93mm diameter (NYM, H07V-K4))
	Cable bundle up to 75mm diameter 5 x 4 x 10mm ² + 25 x 5 x 2,5mm ² (H07RN-F)
	Metal pipe up to 50mm diameter, 2,3mm thickness with ≥10mm combustible or non-combustible insulation
Drill hole Ø 200 mm	PVC pipe up to 50mm diameter, 1,2mm thickness
	PVC pipe up to 75mm diameter, 2,3mm thickness
	5 cables 5 x 2,5mm ² (H07V-K)
	2 NIRO metallic pipes up to 12mm diameter, 2mm thickness
	PVC and PU pipe up to 1 x 8/1mm and 2 x 12/1 mm
	Cable N2XSEY 3 x 150mm ²
Drill hole Ø 250 mm	10 telecommunication lines (à 10mm diameter)
	63 cables 5 x 2,5mm ² (H07-RN-F)
	Copper pipe up to 89mm diameter, 2mm thickness with ≥10mm combustible or non-combustible insulation
	PE pipe up to 75mm diameter, 2,3mm thickness
	PE pipe up to 90mm diameter, 3mm thickness
	10 cables 20 x 2 x 0,6mm ² (F-YAY)
	Cable bundle 10 pc. 4 x 10mm ² (H07RN-F)
	Cable tray 200 x 95mm (perforated)
	20 cables 5 x 2,5mm ² (H07RN-F)
	PE pipe up to 50mm diameter, 1,8mm thickness
Copper pipe up to 32mm diameter, 1,8mm thickness with ≥10mm combustible or non-combustible insulation	
Cable tray 200 x 50 m (perforated)	
Drill hole Ø 250 mm	Metal pipe up to 110mm diameter, 2,9mm thickness with ≥32mm combustible or non-combustible insulation
	Cable bundle 10 pieces, 4 x 10mm ² (H07-RN-F, etc.)
	10 telecommunication lines (à 10mm diameter)
	Cable tray 200 x 95mm (perforated)
Drill hole Ø 250 mm	Cable bundle up to 100mm diameter 16 x 4 x 10mm ² (H07RN-F)

Installation: wall and floor condition

- ⇒ Seal formed from precast Intumex FP of size to match aperture diameter
- ⇒ Mark services with a pen on the backside of the plug
- ⇒ Cut plug to size using standard tools. Allow for a slight minus tolerance of between 5 to 10% (e.g. For a plastic pipe with 100mm diameter, the opening diameter should be between 95mm and 90mm)
- ⇒ Around both single cables and cable bundles apply Intumex MG
- ⇒ Compress and insert the plug into the opening with the convex side visible. The plug should be flush with the surface of the wall and/or floor.
- ⇒ Fix identification label

