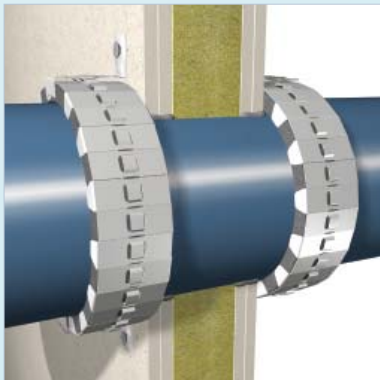
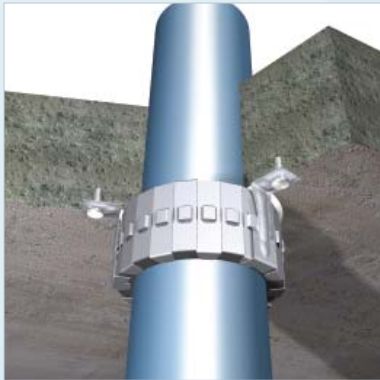
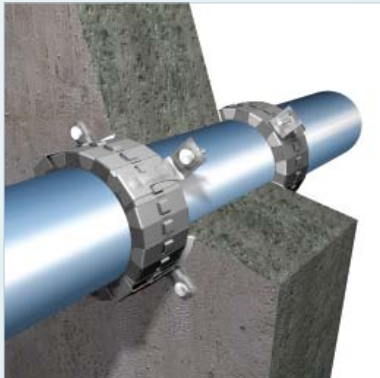


Basic Requirements for Creating a Penetration

Determine the required period of fire resistance of the element, and for loadbearing structures, ascertain the required load. The area to be sealed requires the same fire resistance as the complete floor or wall construction. In order to ensure the stability of the services is maintained under fire conditions, we recommend that all services must be adequately supported at maximum 250mm away from the wall or floor on both sides of the penetration. System fixings, impact protection and suspension elements must be steel. Monal alloys, aluminium etc are not permitted. Accessories such as guard-rails, steel angles, threaded rods. Suspension elements etc. must only be fixed to adjacent solid substrates such as concrete or masonry.

Intumex® products must be applied in accordance with EU directives and national regulations for construction material in general, and fire stopping in particular, with the applicable national test certificates and approvals, and in accordance with applicable national building regulations. Products may only be applied by trained professionals with adequate knowledge of and experience in the use of fire stopping products, and only after a thorough review of the installation guidelines, the safety data sheets, and the national test certificates and approvals. All the relevant documents can be obtained free-of-charge by contacting Intumex® or from your local dealer via telephone or in writing; in addition all installation guidelines and the safety data sheets can be downloaded free-of-charge from the Intumex® website (see www.intumex.at).



General Information

- ⇒ Intumex® UC is suitable for surface-mounted and built-in conditions
- ⇒ Fire stopping collars are installed in pairs in both surface-mounted and built-in conditions in walls. A single collar only is required on the underside of floors or ceilings;
- ⇒ Suitable for all common plastic piping materials – refer to the chart “Areas of Application” on next page;
- ⇒ Suitable for pipes carrying non-flammable liquids and gases, and pipemail line, incl. control cables;
- ⇒ For surface mounted collars, several collars can be fixed adjacent to one another without consideration of minimum spacing requirements. However for collars built into the thickness of a wall, there must be a minimum distance of 100mm between collars.
- ⇒ The strip can be used to make as many collars as desired, however it should be noted that collars cannot be constructed from more than a single section, i.e. only one joint per collar is permitted.

Intumex® products must be applied in accordance with EU directives and national regulations for construction material in general, and fire stopping in particular, with the applicable national test certificates and approvals, and in accordance with applicable national building regulations. Products may only be applied by trained professionals with adequate knowledge of and experience in the use of fire stopping products, and only after a thorough review of the installation guidelines, the safety data sheets, and the national test certificates and approvals. All the relevant documents can be obtained free-of-charge by contacting Intumex® or from your local dealer via telephone or in writing; in addition all installation guidelines and the safety data sheets can be downloaded free-of-charge from the Intumex® website (see www.intumex.at).

Application EI120 according EN1366-3

Surface mounted installation

	Solid wall >100mm	Concrete floor >150mm	Drywall
Pipe material	Pipe diameter / Thickness(es) One collar on both sides of the wall	Pipe diameter / Thickness(es) One collar on underside of the floor	Pipe diameter / Thickness(es) One collar on both sides of the wall
PVC-U, PVC-HI, PVC-C, PP	ø 50 - 110mm t 1.8 – 2.7mm	ø 50 - 110mm t 1.8 – 2.7mm	ø 50 - 110mm t 1.8 – 2.7mm
PE-HD, LDPE, PP, ABS, ASA, PE-X, PB, Styrol-Copolymere, Mineral enforced plastics pipe	ø 50 - 110mm t 1.8 – 2.7mm	ø 50 - 110mm t 1.8 – 2.7mm	ø 50 - 110mm t 1.8 – 2.7mm

Please contact us for fire stopping requirements not included in above list.

Fixings (included in carton)

The masonry anchors included are only suitable for solid concrete walls and floors.

The screws included are suitable for drywalls. Do not over-tighten the screws!

Fixings (additional options)

For solid walls and floors (concrete, solid brick, stone and aerated concrete) hardened steel self-drilling screws (Torx 30, yellow zinc plated, 7.5 x 72mm, counter-sunk 11mm) are also suitable.. The washer included within the packaging must be inserted between the collar fixing flange and the screw head. Do not over-tighten the screws!

Where collars are fixed to drywall constructions, the fixing must consist of minimum M6 threaded rods, which pass through the entire thickness of the partition construction; the collars are held into place by the use of nuts and washers onto each end of these threaded rods.

Application Condition

- ⇒ No known limits

Installation: wall condition; collar pair

Surface-mounted condition:

- ⇒ Fill gap (maximum 15mm) between pipe and wall with mineral wool (melting point >1000°C), plaster, mortar, concrete or sealants;
- ⇒ Define pipe diameter;
- ⇒ Define length of strip (refer to following chart);
- ⇒ Cut inlay to size and break off metal strip;
- ⇒ Place strip around the plastic pipe and secure with supplied bracket;
- ⇒ Apply brackets symmetrically according to following chart;
- ⇒ Fix pipe collar to the wall with the included or other suitable fixings;
- ⇒ Fix identification label.

Installation: floor condition; single collar

Surface-mounted condition:

- ⇒ Fill gap (maximum 15mm) between pipe and wall with mineral wool (melting point >1000°C), plaster, mortar, concrete or sealants;
- ⇒ Define pipe diameter;
- ⇒ Define length of strip (refer to following chart);
- ⇒ Cut inlay to size and break off metal strip;
- ⇒ Place strip around the plastic pipe and secure with supplied bracket;
- ⇒ Apply brackets symmetrically according to following chart;
- ⇒ Fix pipe collar to the wall with the included or other suitable fixings;
- ⇒ Fix identification label.

For additional information on how and where to use this product, please refer to our systems database on the enclosed CD, or visit our website at <http://www.intumex.at>

Strip dimension

Length of strip 2250mm or 150 segments

External pipe diameter (mm)	Segments per pipe	Number of collars per carton	Number of Brackets
43mm	15	10	2
50mm	17	8	2
55mm	18	8	2
63mm	20	7	3
69mm	21	7	3
75mm	22	6	3
83mm	24	6	3
90mm	25	6	3
110mm	29	5	3
114mm	30	5	4 single + 4 double*
125mm	33	4	4 single + 4 double*
140mm	36	4	4 single + 4 double*
160mm	40	3	4 single + 4 double*
200mm	49	3	4 single + 4 double*

* for double-collar application