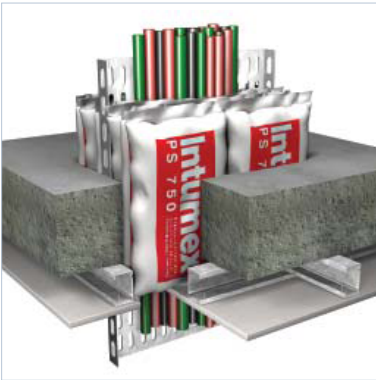


Silicone Trading



Basic Requirements for Creating a Penetration

Determine the required period of fire resistance of the element, and for loadbearing structures, ascertain the required load. The area to be sealed requires the same fire resistance as the complete floor or wall construction. In order to ensure the stability of the services is maintained under fire conditions, we recommend that all services must be adequately supported at maximum 250mm away from the wall or floor on both sides of the penetration. System fixings, impact protection and suspension elements must be steel. Monal alloys, aluminium etc are not permitted. Accessories such as guard-rails, steel angles, threaded rods. Suspension elements etc. must only be fixed to adjacent solid substrates such as concrete or masonry.

Intumex® products must be applied in accordance with EU directives and national regulations for construction material in general, and fire stopping in particular, with the applicable national test certificates and approvals, and in accordance with applicable national building regulations. Products may only be applied by trained professionals with adequate knowledge of and experience in the use of fire stopping products, and only after a thorough review of the installation guidelines, the safety data sheets, and the national test certificates and approvals. All the relevant documents can be obtained free-of-charge by contacting Intumex® or from your local dealer via telephone or in writing; in addition all installation guidelines and the safety data sheets can be downloaded free-of-charge from the Intumex® website (see www.intumex.at).

General Information

⇒ Suitable for cable transport systems and plastic pipes up to a maximum of external pipe diameter 50mm

Application Conditions

- ⇒ Install Intumex pillows in a staggered orientation, similar to the pattern used for laying of house bricks

Consumption Data

Opening		Cable Capacity			
Combination PS750/PS300		10%	20%	30%	60%
0.1 m ²	Intumex PS 300	3	2	2	2
	+ Intumex PS 750	12	11	10	9
0.2 m ²	Intumex PS 300	6	4	4	4
	+ Intumex PS 750	24	22	20	18
0.3 m ²	Intumex PS 300	9	6	6	6
	+ Intumex PS 750	36	33	30	27
0.4 m ²	Intumex PS 300	12	8	8	8
	+ Intumex PS 750	48	44	40	36
0.5 m ²	Intumex PS 300	15	10	10	10
	+ Intumex PS 750	60	55	50	45
0.6 m ²	Intumex PS 300	18	12	12	12
	+ Intumex PS 750	72	66	60	54
0.7 m ²	Intumex PS 300	21	14	14	14
	+ Intumex PS 750	84	77	70	63
0.8 m ²	Intumex PS 300	24	16	16	16
	+ Intumex PS 750	96	88	80	72
0.9 m ²	Intumex PS 300	27	18	18	18
	+ Intumex PS 750	108	99	90	81
1.0 m ²	Intumex PS 300	30	20	20	20
	+ Intumex PS 750	120	110	100	90

Installation: wall and floor condition

- ⇒ Clean opening;
- ⇒ For horizontal applications only: fix a supporting structure (e.g. steel grid; not supplied;) to the underside of the floor;
- ⇒ First layer of pillows should be installed beneath the cables and/or pipes;
- ⇒ Cover cables and/or pipes with fire stopping pillows;
- ⇒ Close the opening with fire stopping pillows, these should be laid in the fashion of bricks, eg staggered vertical joints, and the pillows must be very tightly packed within the opening. It is important that no gaps are permitted within the opening or around the services.
- ⇒ Fix identification label.

For additional information on how and where to use this product, please refer to our systems database on the enclosed CD, or visit our website at <http://www.intumex.at>