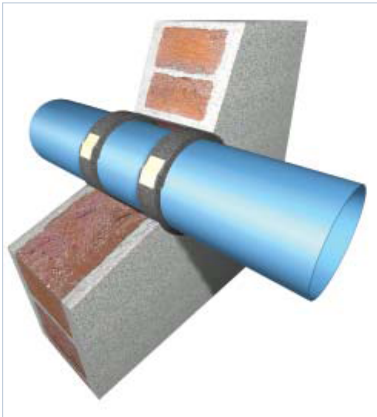
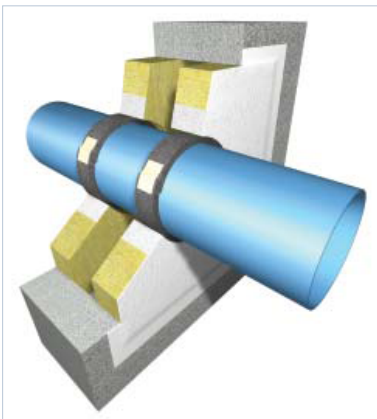


Silicone Trading

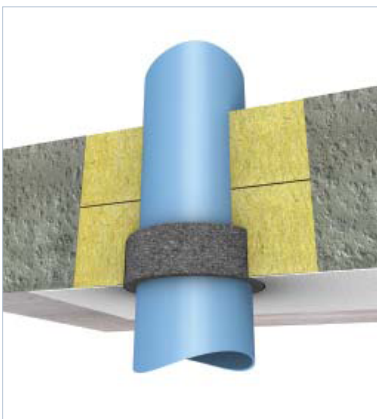


Basic Requirements for Creating a Penetration

Determine the required period of fire resistance of the element, and for loadbearing structures, ascertain the required load. The area to be sealed requires the same fire resistance as the complete floor or wall construction. In order to ensure the stability of the services is maintained under fire conditions, we recommend that all services must be adequately supported at maximum 250mm away from the wall or floor on both sides of the penetration. System fixings, impact protection and suspension elements must be steel. Monal alloys, aluminium etc are not permitted. Accessories such as guard-rails, steel angles, threaded rods. Suspension elements etc. must only be fixed to adjacent solid substrates such as concrete or masonry.



Intumex® products must be applied in accordance with EU directives and national regulations for construction material in general, and fire stopping in particular, with the applicable national test certificates and approvals, and in accordance with applicable national building regulations. Products may only be applied by trained professionals with adequate knowledge of and experience in the use of fire stopping products, and only after a thorough review of the installation guidelines, the safety data sheets, and the national test certificates and approvals. All the relevant documents can be obtained free-of-charge by contacting Intumex® or from your local dealer via telephone or in writing; in addition all installation guidelines and the safety data sheets can be downloaded free-of-charge from the Intumex® website (see www.intumex.at).



General Information

- ⇒ Intumex® Wrap is only suitable for built-in installation;
- ⇒ Fire stopping wraps are installed in pairs in walls. A single wrap only is required on the underside of floors.
- ⇒ The amount of layers must be considered, refer to the chart "Areas of Application" on page 60;
- ⇒ No waste, as off-cuts can be re-used.

Installation: wall conditions; wrap pair

- ⇒ Clean pipes;
- ⇒ Define pipe outer-diameter;
- ⇒ Define number of wrap layers, length of wrap (refer to following chart) and cut to length;
- ⇒ Wrap around the plastic pipe and fix with tape;
- ⇒ Slide the fire stopping wrap into the wall until it is flush with the wall;
- ⇒ Fill gap between pipe and wall with mineral wool (melting point >1000°C) and coat with fire stopping coating. Solid condition: apply shuttering and use fire stopping mortar. Covering of wrap with coating or mortar is not permitted;
- ⇒ Fix identification label.

Installation: floor condition; single wrap

- ⇒ Clean pipes;
- ⇒ Define pipe outer-diameter;
- ⇒ Define number of wrap layers, length of wrap (refer to following chart) and cut to length;
- ⇒ Wrap around the plastic pipe and fix with tape;
- ⇒ Slide the fire stopping wrap into the wall until it is flush with the floor;
- ⇒ If necessary fix appropriate wrap support;
- ⇒ Fill gap between pipe and wall with mineral wool (melting point >1000°C) and coat with fire stopping coating. Solid condition: apply shuttering and use fire stopping mortar. Covering of wrap with coating or mortar is not permitted;
- ⇒ Remove wrap support;
- ⇒ Fix identification label.

For additional information on how and where to use this product, please refer to our systems database on the enclosed CD, or visit our website at <http://www.intumex.at>

Wrap consumption for plastic pipes:

External pipe diameter	Number of layers	Wrap length per pipe in cm	Number of wraps per 18m coil
≤ 32	2	24	75
≤ 50	2	35	51
≤ 63	2	44	40
≤ 75	3	79	22
≤ 90	4	127	14
≤ 110	4	152	11
≤ 125	4	171	10
≤ 160	6	332	5

Wrap consumption for metal pipes with B1/B2 insulation (cold/heat, acoustic insulation):

≤ 16 mm insulation thickness	1 layer
≤ 32 mm insulation thickness	2 layers
≤ 45 mm insulation thickness	3 layers
≤ 50 mm insulation thickness	4 layers

Areas of Application

EI120 acc. to EN13501-2, F/S-90 acc. to ÖNORM 3807

Substrate/ Compartment	Position	B1, B2 pipes (PVC, PE, PP) U/U	Metal pipes incl. thermal insulation (≤34 mm) U/C
Solid Wall ≥ 150mm	both sides	PVC, PE, PP up to 160mm, s=3.6mm	copper up to 89mm s=1,6mm steel/cast iron up to 220mm, s= up to 18mm
Drywall or solid wall ≥150mm in soft penetration 100mm CSP, AB, or AS (Multi-penetration 1200x1200)	both sides	PVC, PE, PP up to 160mm, s=3.6mm	copper up to 89mm s=1,6mm steel/cast iron up to 220mm, s= up to 18mm
Solid wall ≥150mm in soft penetration 100mm CSP, AB, or AS (Multi-penetration 1200x1200)	on the underside of het floor	PVC, PE, PP up to 160mm, s=3.6mm	steel/cast iron up to 220mm, s= up to 18mm

Please contact us for fire stopping requirements not included in above list.

Application Conditions for Intumex® Wrap

⇒ No known limits